

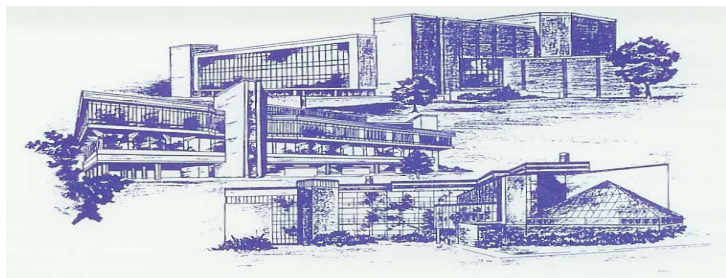
F. Are you a Vietnam-era Veteran? 1. Yes 2. No

A Vietnam-era Veteran is any Veteran of the armed forces who, between August 5, 1964, and May 7, 1975, served on active duty for at least 181 consecutive days, or who was discharged sooner because of a service-related disability.

G. Do you have a disability? 1. Yes 2. No

Disabled means any person who (1) has a physical or mental impairment that substantially limits one or more major life activity; (2) has a record of such impairment; or (3) is regarded as having such an impairment. A qualified individual with a disability is someone capable of performing the job with or without reasonable accommodation. If you want UIS to consider arrangements to accommodate your impairment, you should identify that impairment and suggest the kind of accommodation that you believe would be appropriate in the space provided below.

The faculty and staff at the University of Illinois at Springfield are key to the strong reputation of the campus for creating a diverse, friendly, and personalized learning environment in which students excel.



Equal Opportunity

The University of Illinois at Springfield is committed to a policy of equal opportunity in employment, education, and access to campus facilities without regard to race, creed, sex, national origin, age, or disability. UIS’ policy is intended to carry out explicitly all state and federal laws and executive orders that prohibit discrimination.

About the University of Illinois at Springfield

The University of Illinois at Springfield is one of three campuses of the University of Illinois. Located in the state capital of Springfield Illinois, UIS is situated on a 746-acre campus near Lake Springfield. The site includes a 510,000-volume teaching library, the Public Affairs Center with its 2,017-seat performing arts auditorium and fully equipped conference facilities, a Health and Sciences Building, a technologically advanced classroom/office building equipped with smart classrooms, a television office and public radio station, and on-campus housing.

The campus serves approximately 4,500 students in 20 graduate and 21 undergraduate programs. The academic curriculum of the campus emphasizes a strong liberal arts core, an array of professional programs, extensive opportunities in experiential education, and a broad engagement in public affairs issues. The campus offers small classes, substantial student-faculty interaction, and a rapidly evolving technology-enhanced, learning environment. Its diverse student body includes traditional, non-traditional, and international students. Its faculty are committed teachers, active scholars, and professionals in service to society.

EOE Forms should be mailed to:
Office of Access and Equal Opportunity, University of Illinois at Springfield, One University Plaza, Springfield, IL. 62703-5407