

# PSYCHOPATH

volume 4: issue 1



UIS PSYCHOLOGY DEPARTMENT NEWSLETTER

*Newsletter Designed by:  
Frances Shen*

*Inside this Issue:*



PSYCHOLOGY AWARD WINNERS	1
PSI CHI	2
GRADUATED STUDENTS	2
DEPARTMENT RESEARCH LABS	3-4
FACULTY NEWS	4-5
STUDENT REPRESENTATIVE	6
GRADUATE ASSISTANTS	6
NEW FACULTY	6
UPCOMING CONFERENCES	6

## \* 4th Annual College of Liberal Arts & Sciences Graduation Reception \*

### PSYCHOLOGY AWARD WINNERS

In May 2008, the College of Liberal Arts & Sciences hosted the fourth annual reception for its graduating seniors. Students and faculty were able to share stories and say good-bye one final time before the graduation ceremony. Various departments also gave out awards to their outstanding graduates. In the Psychology Department, the following awards were given to our graduating seniors:

**Aaron Shilling** was nominated as the **Psychology Department Student Marshal** at the 2008 graduation ceremony. This honor is given to a graduating senior who best exemplifies the goals and spirit of the department. At the graduation ceremony, the student marshal leads the other psychology graduates through the procession and the presentation of their diplomas.

**Elizabeth Bean** received the **Outstanding Psychology Student Scholar** award for her excellence in academic performance.

**Heidi Fisher & Isaac Moore** received the **Outstanding Student Research Projects** for research on *Pupil Dilation and Violent Images* and *Shyness and Self-Presentation*, both of which were supervised by Dr. Jason Barker.

**Jen Ladage** received the **Outstanding Service to the Psychology Department** award for her work as the Department Student Representative and being an active member of Psi Chi.

**Anna Bridges & Colleen Gennicks** received the **Outstanding Psychology Senior Seminar Portfolio** award for creating exceptional portfolios in the Senior Seminar capstone course.



*From left to right:* Heidi Fisher, Elizabeth Bean, Anna Bridges, Aaron Shilling & Isaac Moore.  
*Not pictured:* Jen Ladage & Colleen Gennicks

# PSI CHI NEWS



**Psi Chi is the National Honor Society in Psychology.**  
The UIS Chapter of Psi Chi is sponsored by Dr. Jason Barker.

**2008-2009 Psi Chi Officers are: Ashleigh Sanderfield** (President), **Joseph Dattoli** (Vice-President), **Amy Quarton** (Webmaster/Historian), **Valerie Truitt** (Secretary), **Allison Holbrook** (Treasurer)

**Fall 2008 new inductees are:** David Baker, Jennifer Donaldson, Teresa Krstulovich, Lindsey Kucera, Shannon Lubben, Besarion Mkheidze, Denise Pierson, Amie Poole, Joanna Ragan, Leryn Rector, Erin Shaefer, Steven Snyder, Valerie Truitt, Ashley Warren, Sarah Wolsfeld, Donna Young, Amy Quarton



Psi Chi has raised over \$500 from a bake sale on campus and a bowling fundraiser held at Strike and Spare West on November 9th. Much of the proceeds will be used to fund a free breakfast for over 200 people at the Washington Street Mission early in 2009 (and we will be looking for up to 20 volunteers to help us cook and serve it in February if anyone is interested!).

We will be wrapping gifts and providing clothes to the mission as well over Christmas, and some money will also go to a local charity for rural needy families run by our former graduate assistant Julie Faires. In addition to the Mission Breakfast this Spring, we will again plan to take part in the Walk a Mile in her shoes fundraiser for the Prairie Center Against Sexual Assault, where last year we were part of the UIS contingent that raised nearly \$2500.



## Where Are They Now?

**Jason Scott** - currently enrolled as a graduate student in the Public Health Master's degree program at UIS.

**Stephanie Myers** - currently enrolled as a graduate student in the Human Development Counseling Master's degree program at UIS and serving as a graduate assistant in our department.

**Monica Qualls** - currently enrolled as a graduate student in the Human Development Counseling program Master's degree program at UIS.

**Tammy Hershberger** - currently enrolled as a graduate student in the Human Development Counseling Master's degree program at UIS.

**Aaron Shilling** - currently enrolled as a graduate student in the General Experimental Psychology M.S. Program at Western Illinois University.

# Psychology Research Assistants

**Tori McColez** and **Ali Janezic** are working as research assistants for **Dr. Marcel Yoder**. They are currently working on two projects – one that examines the effects that facial attractiveness, race, and gender have on self-perceptions of facial attractiveness, and another that focuses on how impressions formed of others varies as a function of psychological proximity. They are collecting data to compare ratings of individuals by others who interact with the them, view brief videos of them, or merely see photos of them. The research findings related to the first project were presented at the annual meeting of the Association for Psychological Science in Chicago in 2007.



Tori McColez,  
Dr. Marcel Yoder,  
& Ali Janezic

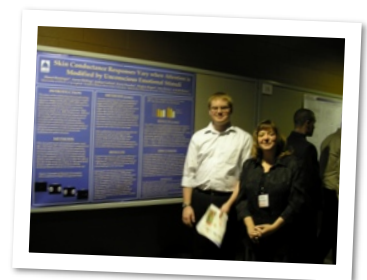
**Amy Quarton** and **Valerie Truitt** are research assistants in Dr. **Sheryl Reminger's** lab. They have assisted with Dr. Reminger's study *Physiological Links to Attention, Cognition, and Emotion*, which is designed to examine how emotionally salient information affects attention and physiological responses. Amy and Valerie are also conducting their own research projects. Amy is studying the *Effects of Emotional and Evolutionarily-Relevant Stimuli on Spatial Attention* and Valerie is studying the *Effects of Emotional Congruency on Visual Attention*.

Amy Quarton  
&  
Valerie Truitt



**Aaron Shilling** also submitted a manuscript to the Psi Chi Journal of Undergraduate Research entitled *Face Your Fears: Attentional Biases Toward Threat Faces Depend on Specific Low-Level Anxiety Symptoms* based on the an independent research project that he conducted under the supervision of **Dr. Sheryl Reminger**.

Aaron Shilling  
&  
Dr. Sheryl Reminger



**Savannah Berg** and **Joshua Friedman** are research assistants in **Dr. Karen Mooney's** research lab. The current research project is a short-term longitudinal study involving 7th and 10th graders. The group is examining the different patterns of quality in adolescents' friendships and how friendship quality is associated with adjustment outcomes (e.g., self-esteem, behavior problems). Also of interest is how friendship quality patterns change over time and whether changes in a friendship's quality are associated with changes in adjustment.

Savannah Berg  
&  
Joshua Friedman





Dr. Keith Burton,  
Ashley Warren,  
Sarah Wolsfeld,  
& Lindsey Kucera

**Sarah Wolsfeld, Ashley Warren, and Lindsey Kucera** are currently research assistants in **Dr. Keith Burton's** research lab. They are currently working on research that focuses on investigating emotion processing at different phases of the menstrual cycle, and possible relationships between changes in emotion processing and PMS symptoms.

**Dr. Karen Pressley** is currently working with **Amy Quarton** (co-supervised with Dr. Sheryl Reminger) and **Jessica Neighbors** (co-

supervised with Dr. Jason Barker). Amy is currently working on a research study on the spatial attention modulation and awareness of backward masked fearful faces. Jessica is working on an independent project entitled *The Experimental Manipulation of Visual Attention Bias and Effect on Mood*.

In collaboration with **Dr. Jason Barker, Heidi Fisher** presented a poster entitled *Pupil Dilation and Violent Images: Gamers and Non-Gamers* at the MidWestern Psychological Association conference in Chicago in May 2008. **Isaac Moore** presented a poster entitled *Shyness and Self-Presentation: Conscious and Non-Conscious Factors in Self Concept Formation* at the same conference. Isaac also won the award for *Best Undergraduate Student Poster Presentation* at the 2008 UIS Science Research Symposium for a presentation on the same study.

## Faculty News

**Dr. Marcel Yoder** presented two poster presentations at the 2008 Association of Psychological Sciences Conference in collaboration with UIS students Tori McColez and Ali Janezic. The first focused on how impressions formed of others varies as a function of psychological proximity and the other was entitled *Accurate and Enhanced Self-Perceptions of Facial Attractiveness*.

**Dr. Sheryl Reminger** presented a poster titled *Decline in Cognitive Function Following Treatment for Head and Neck Cancer* at the 2008 meeting of the Midwest Neuropsychology Group in Chicago. Dr. Reminger presented a poster titled *Skin Conductance Responses Vary when Attention is Modified by Unconscious Emotional Stimuli* at the 2008 meeting of the Association for Psychological Science in Chicago. UIS faculty members **Dr. Karen Pressley** and **Dr. Keith Burton** and UIS students Aaron Shilling, Meghan Rogers, and Amy Barnes collaborated on the project and were co-authors on the poster.

**Dr. Sheryl Reminger** was a co-author on three manuscripts published in 2008: (1) *Factors Associated with Fatigue, Sleep, and Cognitive Function among Head and Neck Cancer Patients*, published in the journal *Head and Neck*, (2) *White Matter Hyperintensities and Medication Adherence*, published in the journal *Biological Research for Nursing*, (3) *Reduced Frontal White Matter Volume in Long-Term Childhood Leukemia Survivors: A Voxel-Based Morphometry Study*, published in the journal *American Journal of Neuroradiology*.

# Faculty News

**Dr. Karen Mooney** presented a poster entitled *Associations between changes in friendship quality and changes in adjustment: A person-oriented approach* at the 2008 Biennial Meeting of the Society for Research on Adolescence in Chicago.

**Dr. Karen Mooney** was a co-author of a manuscript published in 2008: Laursen, B., & Mooney, K. S. (2008). Relationship network quality: Adolescent adjustment and perceptions of relationships with parents and friends. *American Journal of Orthopsychiatry*, 78, 47-53.

**Dr. Keith Burton** presented a poster entitled *Sex Differences in Positive Facial Expression Chronometry are Explained by Emotion Regulation*, coauthored with UIS students Jason Scott, Tammy Herschberger, Christine McGraw, Stephanie Myers, Dawn Tompkins, Kate Vernor & Amber Waterman, at the 2008 Association for Psychological Science meeting in Chicago. He also presented a poster entitled *Habitual Emotion Regulation and Increased Zygomaticus Major Activity Evoked by Negative Images (or "Grimacing")*, coauthored with UIS students Kristen Hargrave, Stephanie Myers, Ashley Warren, Sarah Wolsfeld, Dawn Tompkins, Monica Qualls, and UIS faculty member **Dr. Sheryl Reminger** at the 2008 Society for Psychophysiological Research in Austin.

**Dr. Keith Burton** has taken the position of Department Chair in the Psychology Department beginning in Fall 2008 semester.

**Dr. Carrie Switzer, Dr. Lynn Pardie, Dr. Keith Burton, and Dr. Sheryl Reminger** presented a poster entitled *Capstone course: Curricular assessment and students outcomes based on the APA's learning goals* at the 2008 annual meeting of the American Psychological Association in Boston.

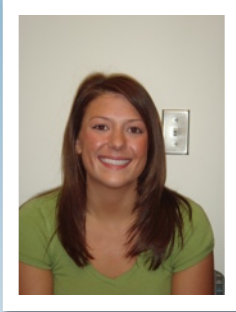
**Dr. Karen Pressley** presented a poster entitled *Subliminal Fearful Faces Enhance Contralateral Occipital Cortical Activity for Visual Targets within the Spotlight of Attention* at the 2008 meeting of the Society for Neuroscience in Washington. She also presented a poster entitled *Genetic Influences on Attentional Response to Emotional Faces in 5-Year-Old Twins* at the 2008 meeting of the Behavior Genetics Association in Louisville, KY.

**Dr. Karen Pressley** was a co-author of a manuscript published in 2008: Carlson, J.M. & Reinke, K. (2008). Masked fearful faces modulate the orienting of covert spatial attention. *Emotion*, 8(4), 522-529.

**Dr. Frances Shen** presented two poster presentations at the 2008 annual meeting of the American Psychological Association in Boston. The posters were entitled *Validating the Internalization of Asian American Stereotypes Scale* and *Religion/Spirituality Training in Psychology, Religious/Spiritual Beliefs, and Related Counseling Practices*. She also presented two posters and a symposia presentation at the 2008 International Counseling Conference in Chicago. The posters were entitled *Influence of Acculturation Strategies on Counseling Psychology Graduate/Professional Training: Trainee Perspectives* and *Survivor Perspectives on the Role of Religion and Spirituality in the Sexual Assault/Abuse Recovery Process*. The symposia presentation was entitled *Scientist-Practitioner Integration within a multicultural context*.

**Dr. Frances Shen** was a co-author of two book chapters published in the *Counseling Encyclopedia* in 2008 on *Allocentrism* and *Model Minority Stereotype*.

## Student Rep



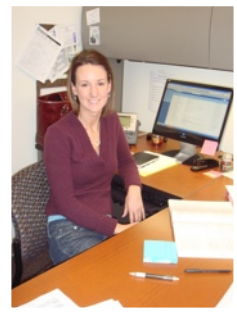
Dear Fellow Psychology Students:

Hi, my name is **Amy Holmes** and I am your psychology student representative. I would like you all to know that if you ever have any questions or concerns, you can address

them to me. I will do my best to talk to the professors and others in the department to let them know about your concerns, and it will always be confidential. Thank you and have a great next semester!

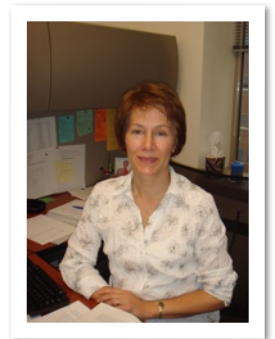
Amy Holmes  
[aholm4@uis.edu](mailto:aholm4@uis.edu)

## Graduate Assistants



**Stephanie Meyers and Ashley Kaye** are the current graduate assistants for the Psychology Department. Both GAs are graduate students from the Human Development Services Master's Degree program at UIS.

As GAs, they assist the faculty with grading assignments and exams, proctoring exams, guest lecturing classes, or provide any other assistance that faculty may need. Their offices are located in UHB 3140.



## New Faculty



**Frances Shen** joined the Psychology Department in the fall of 2008. She received a Ph.D. in Counseling Psychology from Southern Illinois University at Carbondale. Dr. Shen is engaged in research on

multicultural and diversity issues in counseling and clinical psychology, with a focus on Asian American psychology and international student issues. She is currently engaged in research in the area of internalized stereotyping among Asian Americans and multicultural competency of medical providers and its impact on health disparities. At UIS she is teaching Abnormal Psychology, Theories of Personality, and Multicultural Issues in Counseling and Clinical Psychology.

## Conference Dates

**Midwestern Psychological Association**  
Date: **April 30 to May 2, 2009**  
Location: **Chicago, IL**

**Association for Psychological Science**  
Date: **May 22 to May 25, 2009**  
Location: **San Francisco, CA**

**American Psychological Association**  
Date: **August 6 to August 9, 2009**  
Location: **Toronto, Canada**

