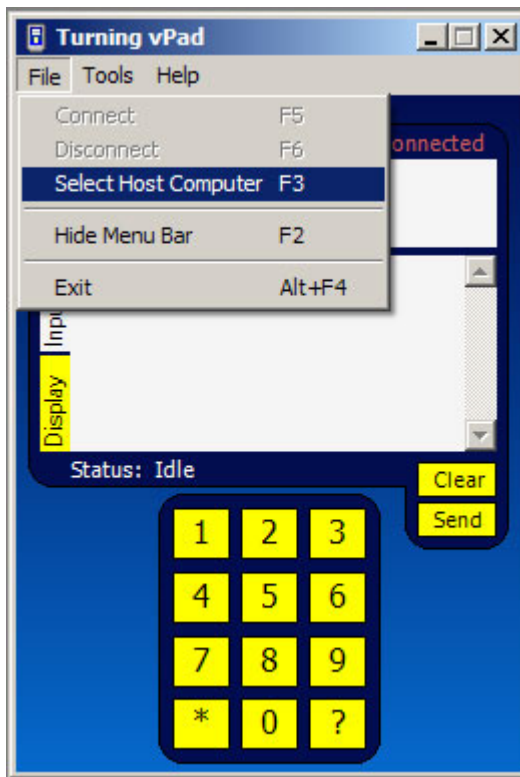


## Connection Directions

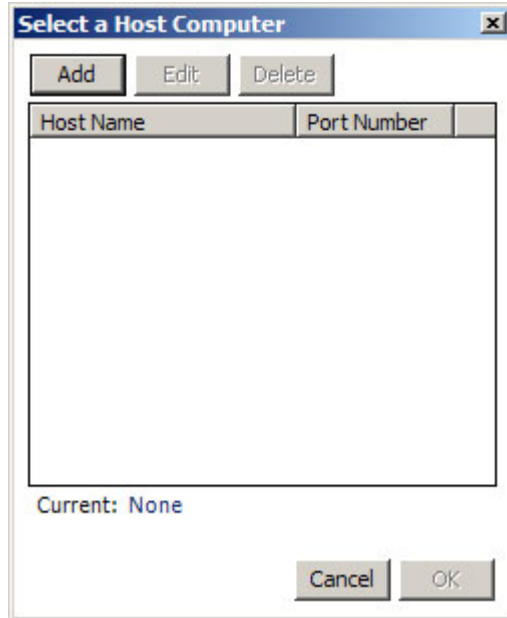
1. Connect to the wireless network by signing on to the VPN.
2. Open the Turning vPad 2006 by double-clicking on the icon on your desktop.



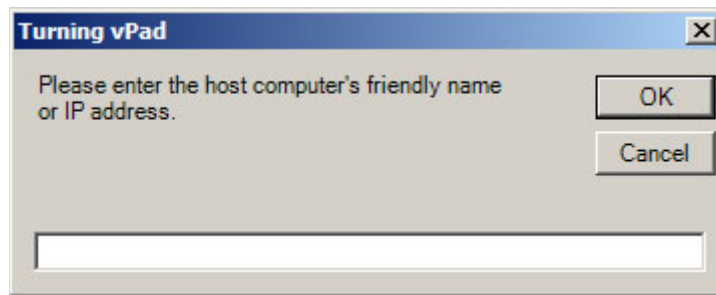
3. Click File > Select Host Computer.



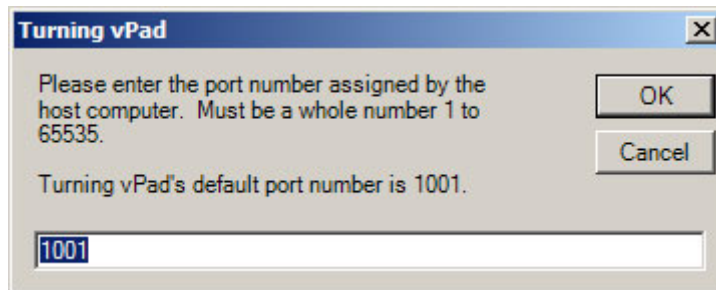
4. Click Add.



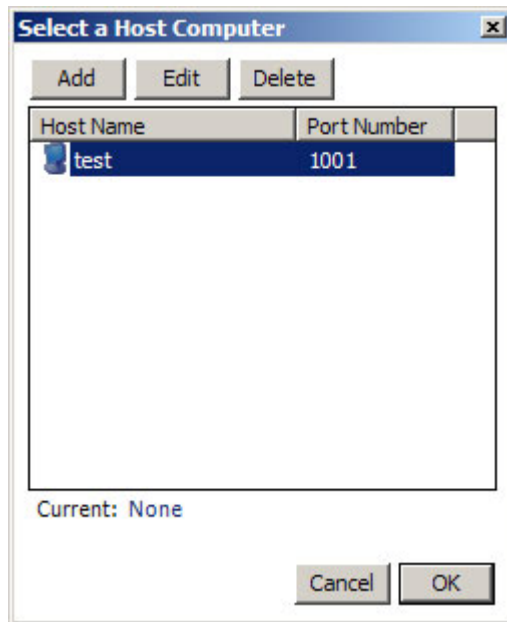
5. Enter the computer's friendly name into the box. This will be provided to you by your professor in class.



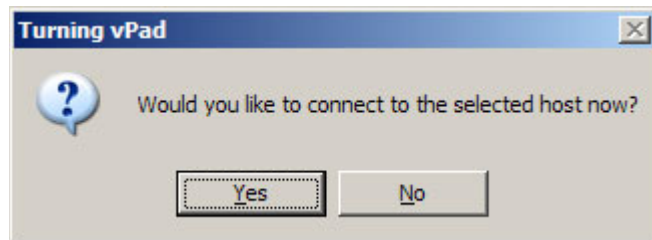
6. Enter "1001" into the box and click OK.



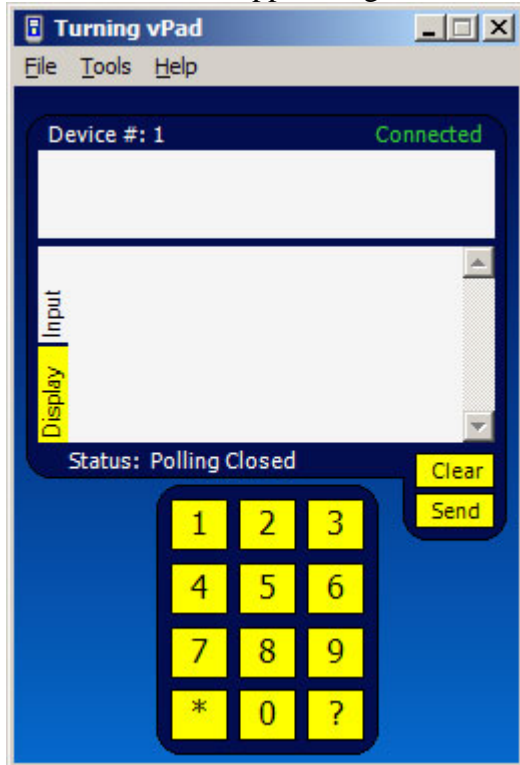
7. Click on the entry with the host computer's friendly name and click OK.



8. Click "Yes" when prompted.



9. The vPad will now connect to the host computer. When it is connected, the word “Connected” will appear in green in the top right corner of the vPad window.



10. You may now respond to questions by clicking on the appropriate number when prompted by your professor.