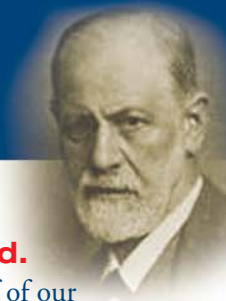


PSYCHOLOGY

bachelor of arts

COLLEGE OF LIBERAL ARTS AND SCIENCES



The scientific study of the human mind and human behavior is a complex task, reflected by the fact that the American Psychological Association has more than 50 divisions, each representing an area of expertise. Psychology majors choose their area of interest and apply their specialized knowledge to a wide range of endeavors including research, mental health care, teaching, business, and government. What they share is a foundation of psychological understanding, and the desire to work in a profession that many believe will ultimately have the greatest impact on the future of humankind.

ADVANTAGE UIS

- **Learn from the pros.** Our teacher-scholars represent a wide range of specializations and hold degrees from such institutions as such institutions as University of Pittsburgh, University of Louisville, University of Arizona, Florida Atlantic University, and Southern Illinois University at Carbondale. Teaching is job one, but they also conduct research, publish, and provide professional consultation to a number of health providers and agencies in Illinois.
- **Minor pursuits.** Ultimately interested in the psychology of criminal justice or the psychology of communication? Prepare by choosing your general electives from these programs. You'll still graduate on time with a major in Psychology and a minor in the field of your choice.
- **Location, location.** Expect to be wowed by our brand new facilities. Besides high tech classrooms and a state-of-the-art computer lab, we have a biofeedback center and observation rooms for audio and videotaping of dyadic or group activities.

Field experience.

Talk about hands on. Through our Applied Study internships, students work with researchers at SIU School of Medicine, counselors at Sojourn Shelter and Services for Domestic Violence Intervention, child life specialists at St. John's Hospital, probation officers, counselors at area correctional centers, and more.

Club Head. There is an active Psychology Club on campus as well as a chapter of the national honor society, Psi Chi – named a Model Chapter by the national office for two years running. One goal of these organizations is to support student travel to regional and national conferences in psychology.

What can I do with this degree?

Our graduates apply their knowledge in business, industry, government and education. Nearly half go on to earn advanced degrees and become researchers, clinical psychologists, counselors, case managers, administrators, grant coordinators, probation officers, and more. **Recent employers include:**

Springfield School District, Menard County Health Department, Senior Services of Central Illinois, Memorial Medical Center, Southern Illinois School of Medicine, Effingham County Probation Department.

Higher ground.

Approximately half of our graduates pursue the helping professions and go on to enroll in master's level graduate programs, most in counseling or clinical psychology.

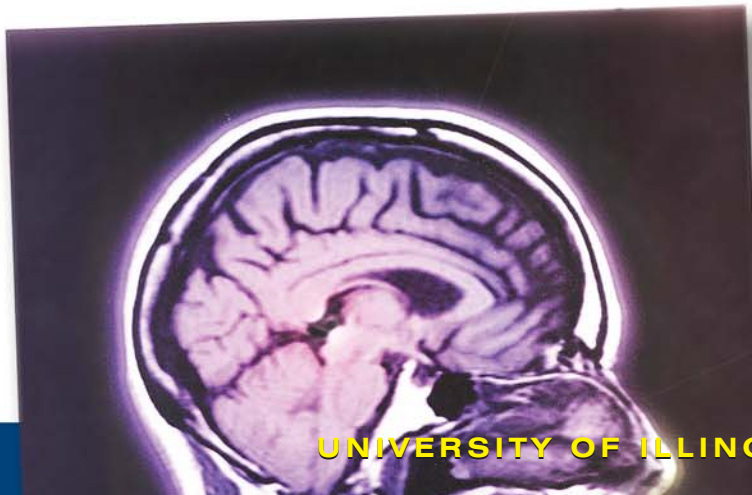


Young minds. We're proud of the fact that approximately a third of our graduates who enter the workforce choose to teach in elementary or secondary schools. Our Educational Psychology concentration prepares them to better understand human development and the learning process.

Wise Words

Marcia Casarta
Screening, Assessment, and Support
Services Counselor, Macoupin County
Health Department

"I use all the skills that I learned from my classes at UIS. I would like to take the opportunity to say how much I appreciate the professionalism and the high standards not only of the requirements of the department but of each of the professors within the department."



The goal of the psychology curriculum is to help students become familiar with common theoretical and research perspectives while also studying topics of particular interest and value. To accomplish this goal, the psychology curriculum contains two core courses that address the problem solving, critical thinking, and communication skills common to psychology as a whole, while course concentrations allow students to further develop and apply these skills within particular content areas and with specific personal or career goals in mind.

Faculty Jason Barker, Keith Burton, Karen Mooney, Lynn Pardie, Karen Pressley, Sheryl Reminger, Frances Shen, Carrie Switzer, Marcel Yoder

Emeritus Faculty Joel Adkins, Ronald Havens, Jonathan L. Hess, John Miller

Entrance Requirements

Undergraduate psychology majors and minors must have completed one introductory psychology course (PSY 201 Principles of Psychology or equivalent) before beginning their upper-division core courses at UIS. Students who achieve scores of four and above on the Advanced Placement Psychology Examination will receive proficiency credit for PSY 201.

Program Requirements

Core requirements: (courses required of ALL psychology majors)

PSY 301 Orientation and Entrance Assessment	0 Hrs.
PSY 302 Research Methods in Psychology	4 Hrs.
PSY 471 Senior Seminar	4 Hrs.
Total 8 Hrs.	

Clinical/Counseling Concentration

Core Concentration Courses	
PSY 303 Statistics for the Behavioral Sciences	4 Hrs.
PSY 311 Cognitive Psychology	4 Hrs.
PSY 315 Psychoactive Drugs	4 Hrs.
PSY 321 Life-span Developmental Psychology W	4 Hrs.
PSY 331 Social Psychology	4 Hrs.
*PSY 351 Abnormal Psychology W	4 Hrs.
PSY 412 Introduction to Biopsychology	4 Hrs.
PSY 441 Theories of Personality W	4 Hrs.
PSY 452 Introduction to Clinical Psychology W	4 Hrs.
PSY 453 Psychological Foundations for Helping	4 Hrs.
PSY 457 Behavior Modification	4 Hrs.
PSY 458 Psychological Tests and Measurement	4 Hrs.
Total 16 Hrs.	

*Note: PSY 351 is a required course in this concentration.

Psychology Electives	
Any psychology course at UIS will fulfill this requirement.	
Total 12 Hrs.	
Concentration Total 28 Hrs.	

*Note: PSY 321, PSY 331, and PSY 351 fulfill the prerequisites for admission to the Human Development Counseling M.A. program at UIS.

Developmental Psychology Concentration

Core Concentration Courses	
PSY 303 Statistics for the Behavioral Sciences	4 Hrs.
PSY 313 Critical Thinking W	4 Hrs.
PSY 314 Sensation & Perception	4 Hrs.
*PSY 321 Life-span Developmental Psychology W	4 Hrs.
PSY 322 Child Development W	4 Hrs.
PSY 323 Adolescence W	4 Hrs.
PSY 324 Exceptional Child W	4 Hrs.
PSY 326 Family Psychology W	4 Hrs.

PSY 331 Social Psychology	4 Hrs.
PSY 412 Introduction to Biopsychology	4 Hrs.
PSY 413 Psychology of Learning and Memory W	4 Hrs.
PSY 416 Psychology of Motivation	4 Hrs.
Total 16 Hrs.	

*Note: PSY 321 is a required course in this concentration.

Psychology Electives	
Any psychology course at UIS will fulfill this requirement.	
Total 12 Hrs.	
Concentration Total 28 Hrs.	

Educational Psychology Concentration*

Core Concentration Courses	
PSY 313 Critical Thinking W	4 Hrs.
PSY 314 Sensation & Perception	4 Hrs.
PSY 321 Life-span Developmental Psychology W	4 Hrs.
PSY 322 Child Development W	4 Hrs.
PSY 323 Adolescence W	4 Hrs.
PSY 324 Exceptional Child W	4 Hrs.
PSY 326 Family Psychology W	4 Hrs.
*PSY 327 Educational Psychology W	4 Hrs.
PSY 413 Psychology of Learning and Memory W	4 Hrs.
PSY 416 Psychology of Motivation	4 Hrs.
PSY 457 Behavior Modification	4 Hrs.
PSY 458 Psychological Tests and Measurements	4 Hrs.
Total 16 Hrs.	

*Note: PSY 327 is a required course in this concentration.

Psychology Electives	
Any psychology course at UIS will fulfill this requirement.	
Total 12 Hrs.	
Concentration Total 28 Hrs.	

*Note: This is the appropriate concentration for elementary education candidates. PSY 322, PSY 323, and PSY 327 fulfill prerequisites for admission to teacher education at UIS, and PSY 324 is a required course for a minor in elementary or secondary education.

Experimental Psychology Concentration

Core Concentration Courses	
*PSY 303 Statistics for the Behavioral Sciences	4 Hrs.
PSY 311 Cognitive Psychology	4 Hrs.
PSY 313 Critical Thinking W	4 Hrs.
PSY 315 Psychoactive Drugs W	4 Hrs.
PSY 321 Life-Span Developmental Psychology W	4 Hrs.
PSY 331 Social Psychology	4 Hrs.
PSY 351 Abnormal Psychology W	4 Hrs.
PSY 412 Introduction to Biopsychology	4 Hrs.
PSY 413 Psychology of Learning and Memory W	4 Hrs.
PSY 416 Psychology of Motivation	4 Hrs.
PSY 441 Theories of Personality W	4 Hrs.
PSY 458 Psychological Tests and Measurement	4 Hrs.
Total 20 Hrs.	

*Note: PSY 303 is a required course in this concentration.

Psychology Electives	
Any psychology course at UIS will fulfill this requirement.	
Total 8 Hrs.	
Concentration Total 28 Hrs.	

Individualized Concentration
(see website for details of this educational path)

Concentration Total 28 Hrs.
Total Hours 60 Hrs.

Psychology minor

To earn a minor in psychology, students must complete a minimum of 20 semester hours, at least 16 of which must be upper-division course work taken at the University of Illinois at Springfield. Four of these hours must be PSY 302 or its equivalent. Students who have earned a B or better in lower-division psychology courses beyond introductory psychology at another institution may use those courses as the basis for a reduction of up to four hours in the total hours required for a minor. PSY 302 is the only required course for a minor in psychology. The remaining 16 hours may be selected from any psychology course offerings; however, all psychology minors must complete a course curriculum form in which they specify the curriculum they have designed in consultation with their advisers.

Visit our website for more information on

- UIS Admission Requirements
- Advising
- Entry and exit assessment exams/ capstone course
- Ethical conduct expectations
- Transfer policies
- Individualized Concentration

To view course descriptions

uis.edu/uiscatalog

CONTACT INFORMATION

Psychology

(217) 206-6696 or psy@uis.edu.

Website

uis.edu/psychology

Office of Admissions (217) 206-4847

or Toll free (888) 977-4847

admissions@uis.edu

uis.edu/admissions

IMPORTANT! — Information effective fall 2009. Subject to change without notice. The information is not to be considered final, nor does it constitute a contract between the student and UIS. See uis.edu/uiscatalog for current program requirements.

The University of Illinois Springfield is one of three campuses of the world class University of Illinois. Located on 746 picturesque acres in the state capital, UIS is a small, public liberal arts university where you learn in small classes with professors who know you. UIS offers 44 degree programs –

23 bachelor's, 20 master's, and the Doctorate of Public Administration. The university has a special mission in public affairs and is known for extraordinary internships, extensive online offerings, and a commitment to engaging students in the community and the world. Enrollment is 4,961 (fall 2009).

