

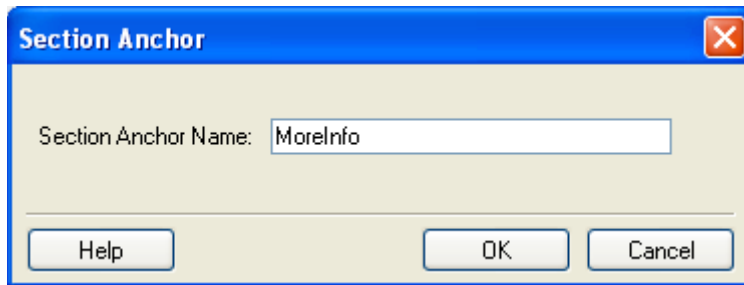
## Creating and Editing Anchors and Anchor Links

---

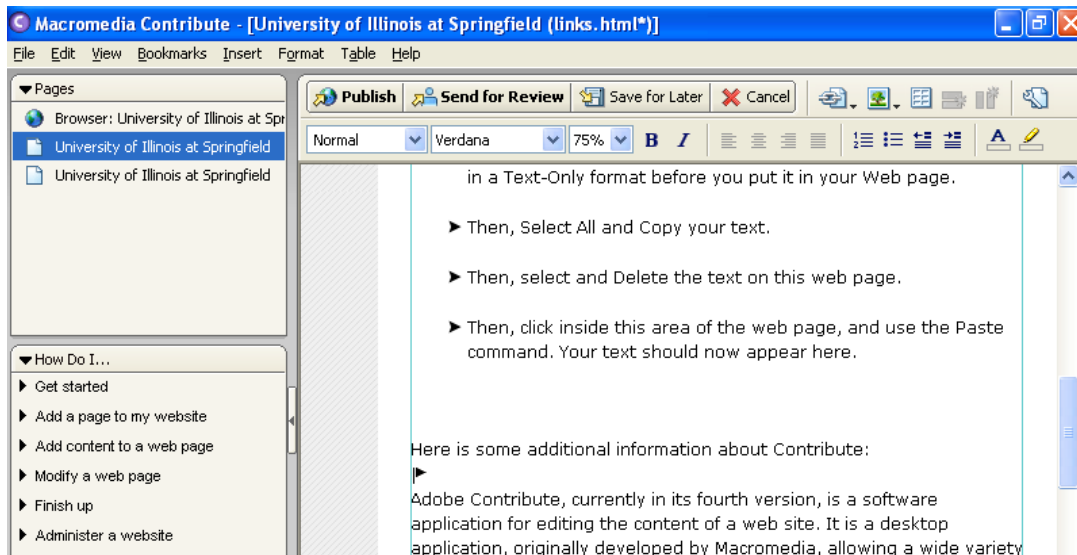
Adobe Contribute can create anchors that allow users to easily navigate the current page they are on. Anchors are links that allow users to “jump” to a different section on the current page. This can be useful, particularly for lengthy web pages. This is a two-step process of creating the anchor and then creating the link that uses the anchor.

### Creating an Anchor

1. While in Contribute, navigate to the page that you desire to add anchors to and click **Edit Page**.
2. Locate the section that you want the link to “jump” to. Place the cursor in this section by clicking on it.
3. Choose **Insert > Section Anchor...**
4. You must now name the anchor that you are creating. Enter a name and then click **OK**.
  - a. Anchor names cannot start with a number or contain spaces.
  - b. Anchor names can only contain letters and numbers.



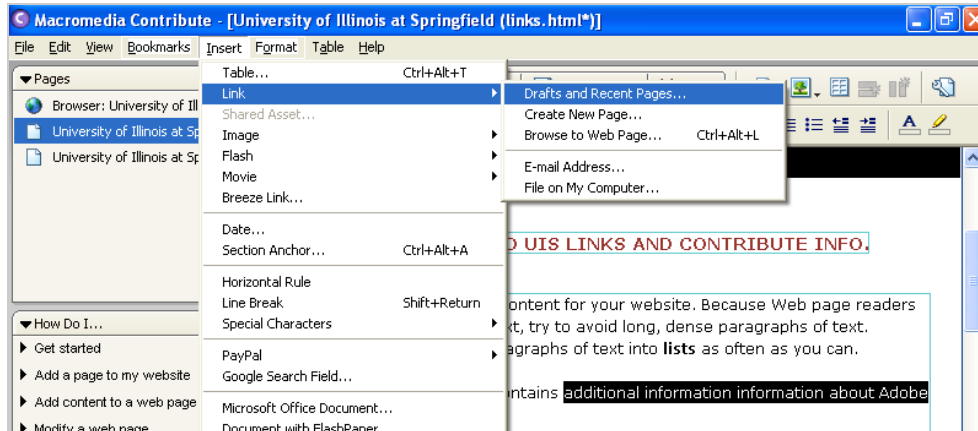
5. Your anchor has been created. The anchor icon [a line and a triangle] will now appear where the anchor has been placed. In our example it appears right above “Adobe Contribute” in the first paragraph.



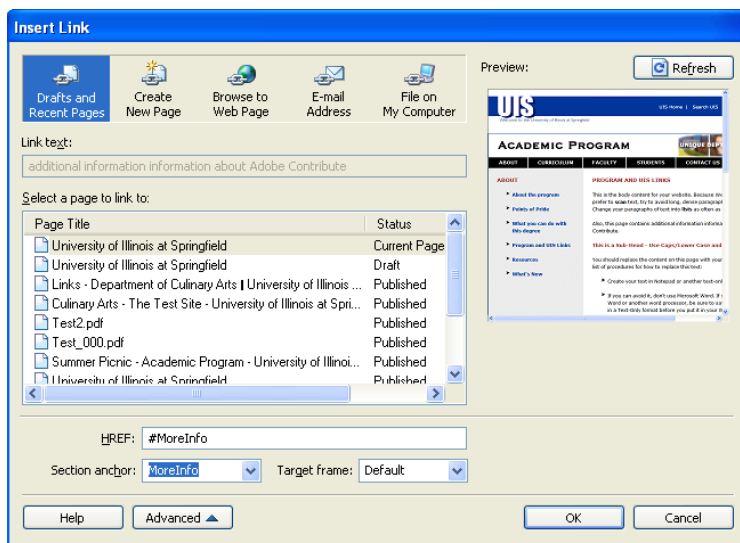
## Linking to an Anchor

When you are finished creating your desired anchors, you may now link to them from a different location.

1. Using your mouse and cursor, highlight the section of text that you wish to become a link. In this example we have highlighted the text “additional information about Adobe Contribute”.
2. Choose **Insert > Link > Drafts and Recent Pages...**



3. You will now be presented with the Insert Link window. Make sure you are showing the advanced options. If you are not, simply click **Advanced**.
4. Under “Select a page to link to:” click on the page that contains the anchor you wish to link to.
5. Click the drop-down box next to “Section anchor:” The anchors that you have created for this page are listed under the names you provided. For this example, we have selected the *MoreInfo* link that we created earlier.



6. Click **OK**.